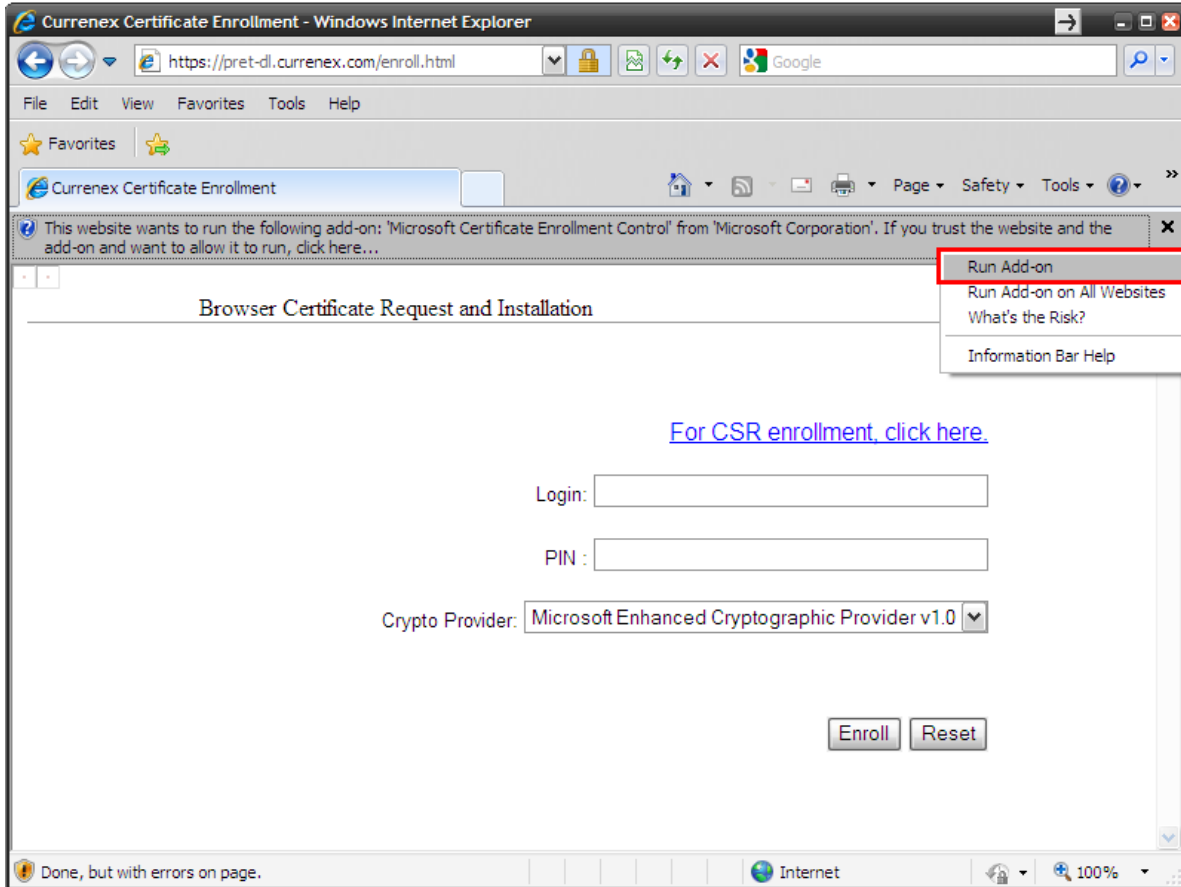


Alpari Direct Pro – Certificate Enrolment Procedure



To begin, please navigate to the following website address: <http://pret.currenex.com/enroll>

Please be aware that Alpari Direct Pro is supported by Internet Explorer only.

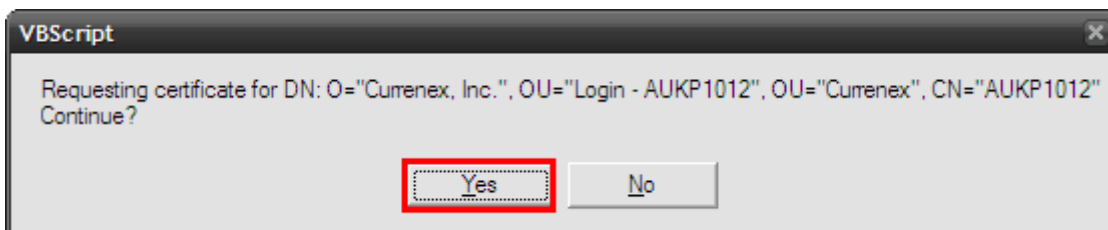


Internet Explorer will require you to authorise the running of the certificate add-on, please select "Run Add-on". The following information will be requested for you to input (see screenshot above):

- Login – as provided by Client Services
- PIN – as provided by Client Services
- Crypto Provider – Leave set to **Microsoft Enhanced Cryptographic Provider v1.0**

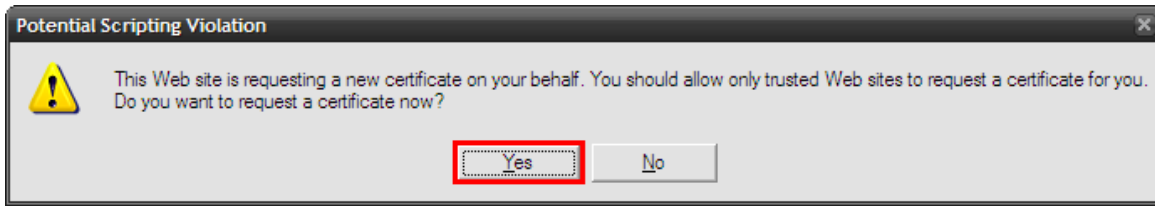
Once you have entered the information, please click 'Enroll'.

The following popup will appear, confirming the enrolment process. Simply proceed to the next step by clicking "Yes" to proceed with the download.



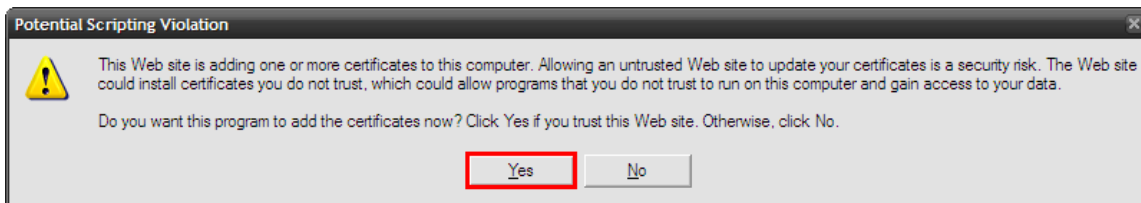
Alpari Direct Pro – Certificate Enrolment Procedure

Another popup will appear confirming that the system will be requesting a certificate. Simply click “Yes” to proceed.

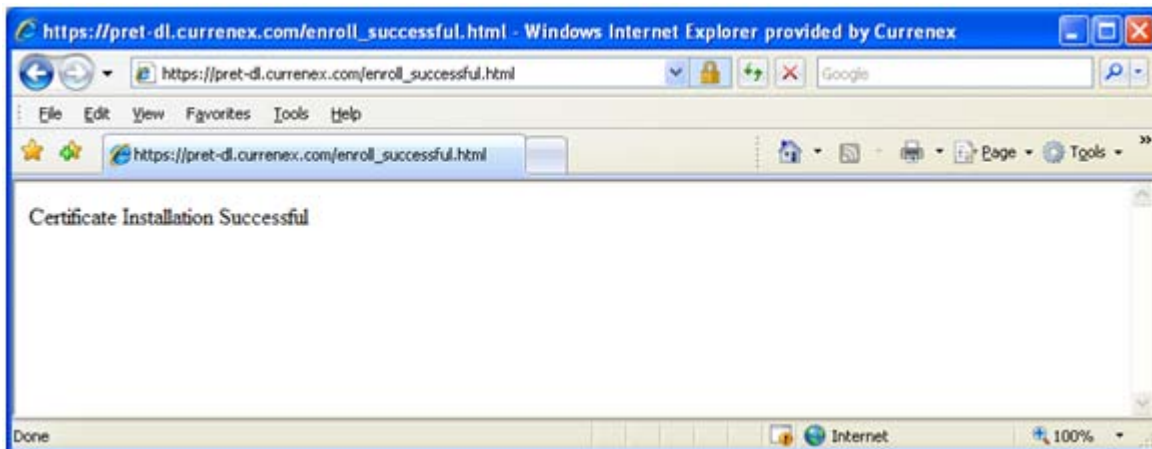


When the certificate generation is complete, the following popup will appear asking you to confirm installation of the new certificate.

Click “Yes” to complete the installation.



Once the installation has successfully completed, the following page will be displayed.



Once the certificate has been installed, you must close and then re-open your web browser to complete the installation process.

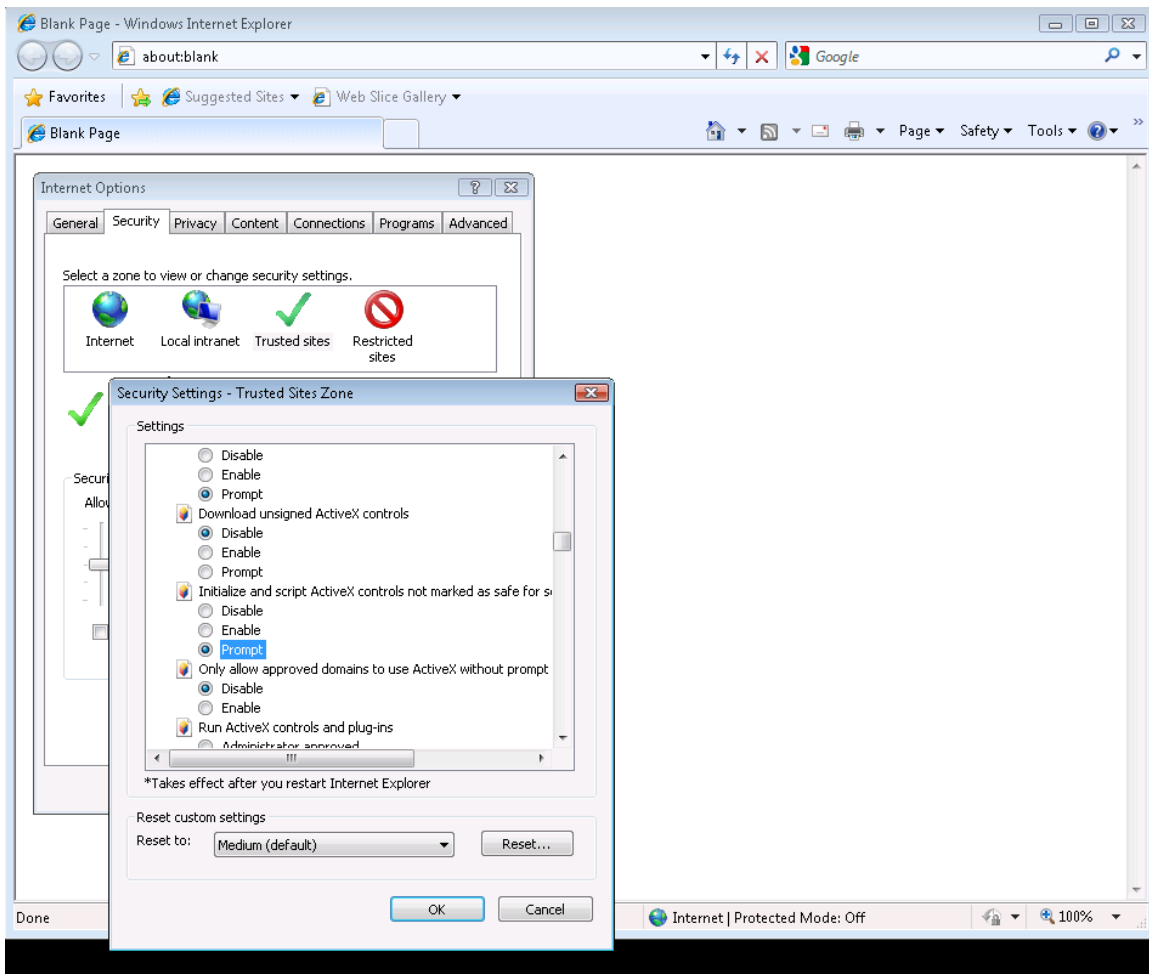
Alpari Direct Pro – Certificate Enrolment Procedure

If running Windows Vista or Windows 7, please change the following settings in your computer.

Run IE as administrator

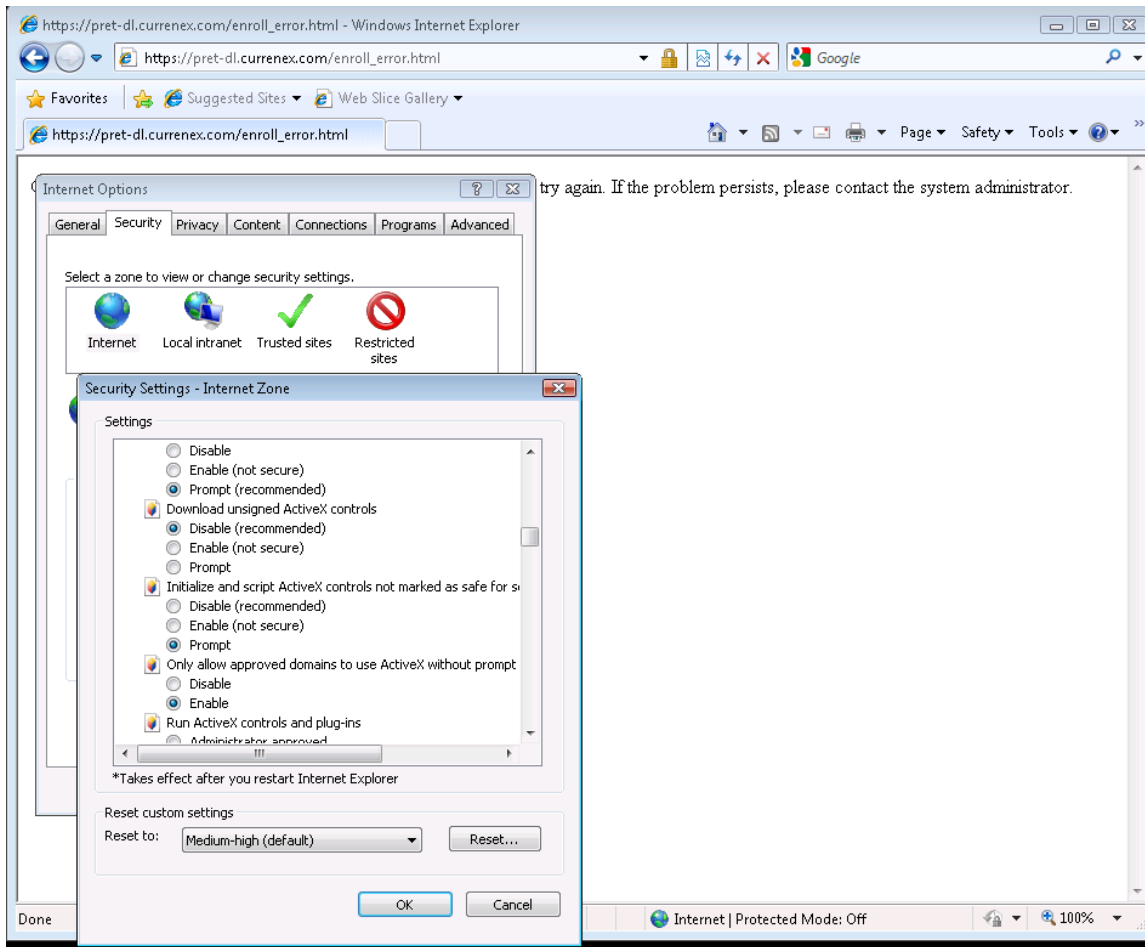
Tools -> Internet Options -> Security = Reset all zones to default level

Trusted Sites -> Custom Level -> Initialize and script ActiveX controls not marked as safe for scripting -> Prompt



Internet -> Custom Level -> Initialize and script ActiveX controls not marked as safe for scripting -> Prompt

Alpari Direct Pro – Certificate Enrolment Procedure



Please restart Internet Explorer once you've completed the above steps.