



FX Daily

Technical Analysis

Alpari Financial Services (India) Pvt. Ltd.
76 C, 3 North Avenue
Maker Maxity, Bandra Kurla Complex
Bandra East, Mumbai 400 051

+91-22-6156 3000 **T**
+91-22-6156 3001 **F**
info@alpari.co.in **E**
www.alpari.co.in **W**

22nd Feb 2012

Technical Reports for USD/INR

USD/INR ST: Rebound towards 50.7

Our pivot point stands at 48.6

Our preference: Rebound towards 50.7.

Alternative scenario: Below 48.6, expect 47.7 and 47.3.

Comment: The RSI is below its neutrality area at 50. The MACD is above its signal line and negative. The configuration is mixed. Moreover, the pair is trading under both its 20 and 50 MAs (respectively at 49.3979 and 51.2106).

Supports and resistances:

- 51.2 *
- 50.7 **
- 50.3
- 49.23 last
- 48.9
- 48.6 **
- 47.7 *



Technical Reports for GBP / INR

GBP/INR ST: Rebound towards 79.8

Our pivot point is at 76.8.

Our preference: Rebound towards 79.8

Alternative scenario: Below 76.8, expect 75.6 and 74.9.

Comment: The RSI is below its neutrality area at 50. The MACD is above its signal line and negative. The configuration is mixed. Moreover, the pair stands below its 20 and 50 MAs (respectively at 77.8439 and 79.5862).

Supports and resistances:

80.5 *
 79.8 **
 79.2
 77.7133 last
 77.2
 76.8 **
 75.6 *



Technical Reports for JPY / INR

JPY/INR ST: The RSI is oversold

Our pivot point is at 0.626.

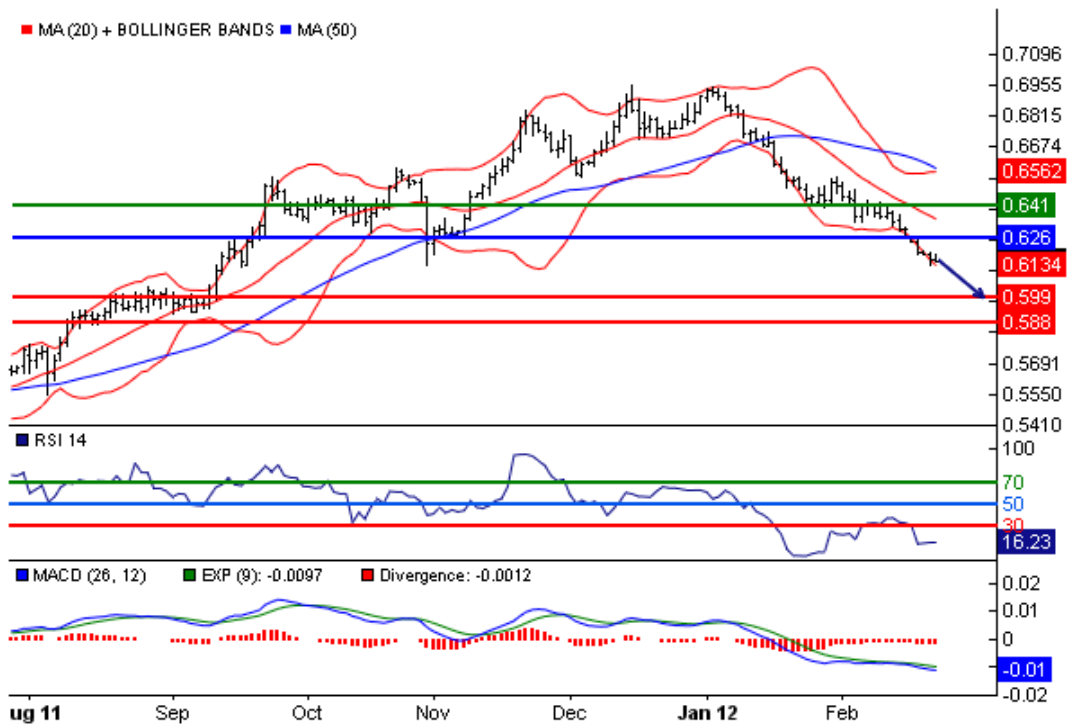
Our preference: The downside prevails as long as 0.626 is resistance.

Alternative scenario: The upside breakout of 0.626, would call for 0.635 and 0.641.

Comment: the RSI is trading below 30. This could mean that either the pair is in a lasting downtrend or just oversold and that therefore a rebound could shape (look for bullish divergence in this case). The MACD is below its signal line and negative. The configuration is negative. Moreover, the pair stands below its 20 and 50 MAs (respectively at 0.6348 and 0.6578).

Support & Resistance:

0.635 *
 0.626 **
 0.622
 0.6158 last
 0.605
 0.599 **
 0.594 *



Technical Reports for EUR / INR

EUR/INR ST: Rebound towards 66.9

Our pivot point stands at 64.3

Our preference: Rebound towards 66.9.

Alternative scenario: Below 64.3, expect 63.4 and 62.8.

Comment: The RSI is below 50. The MACD is negative and above its signal line. The configuration is mixed. Moreover, the pair stands above its 20 MA (64.9954) but below its 50 MA (66.727).

Support & Resistance:



Disclaimer:

Alpari Financial Services (India) Pvt. Ltd. is a 100% fully owned subsidiary of Alpari (UK). Alpari (UK) provides an execution-only service. The material contained here does not contain (and should not be construed as containing) investment advice or an investment recommendation, or, an offer of or solicitation for, a transaction in any financial instrument. Alpari (UK) accepts no responsibility for any use that may be made of these comments and for any consequences that result. This communication must not be reproduced or further distributed. All information in this publication has been compiled from publicly available sources that are believed to be reliable; however we cannot guarantee the accuracy of all information. All information and documentation associated with this report has been produced for the purposes of providing the report only.

Please remember that trading financial markets carries a high degree of risk to your capital. It is possible to lose more than your initial stake. Leveraged products may not be suitable for all investors, therefore please ensure you fully understand the risks involved, and seek independent advice if necessary.